

SWING FRAME WALL MOUNT CABINETS

D Series 19" Swing Frame Wall Mount Cabinets - Reversible Backmount

FEATURES

- Max loading: 60kg
- Supplied complete, no assembly required
- Gloss black colour, easy clean surface
- Material: SPCC quality cold rolled steel
- Thickness: Square hole strips 2.0mm, others 1.2mm
- Compatible with 19" International Standard and Metrical & ETSI standards
- Surface Finish: Degrease, acid pickling, rust prevention and parkerizing pure water cleaning, static electricity plastic painting
- Complies with IEC-60297, ANSI/EIA RS-310-D, IEC297-2, DIN41491; PART1, DIN41494; PART7, GB/T3047.2-92 standards
- 2 Year Warranty on cabinet. Subject to use within the static loading Specification, operation within normal environmental conditions and adequate and appropriate mounting installation. 1 Year Warranty on fans



Model Code	WxDxH (External)	Capacity	Backmount Hole Size	Includes	M3	Kg
CSWC445D	600 x 450 x 281mm	4RU	320 x 200mm	1x Fixed Shelf, 10x Cage Nuts	0.15	20
CSWC645D	600 x 450 x 368mm	6RU	320 x 200mm	1x Fixed Shelf, 10x Cage Nuts	0.19	23
CSWC6550D	600 x 550 x 368mm	6RU	320 x 200mm	2x Fans, 1x Fixed Shelf, 10x Cage Nuts	0.16	23
CSWC9550D	600 x 550 x 501mm	9RU	320 x 450mm	2x Fans, 1x Fixed Shelf, 10x Cage Nuts	0.25	26
CSWC12550D	600 x 550 x 635mm	12RU	320 x 450mm	2x Fans, 1x Fixed Shelf, 10x Cage Nuts	0.31	31
CSWC1260D	600 x 600 x 635mm	12RU	320 x 450mm	2x Fans, 1x Fixed Shelf, 10x Cage Nuts	0.33	34
CSWC1855D	600 x 550 x 901mm	18RU	320 x 450mm	2x Fans, 1x Fixed Shelf, 10x Cage Nuts	0.42	34
CSWC1860D	600 x 600 x 901mm	18RU	320 x 450mm	2x Fans, 1x Fixed Shelf, 10x Cage Nuts	0.46	43
CSWC24550D	600 x 550 x 1167mm	24RU	320 x 450mm	2x Fans, 1x Fixed Shelf, 10x Cage Nuts	0.54	50
CSWC2460D	600 x 600 x 1167mm	24RU	320 x 450mm	2x Fans, 1x Fixed Shelf, 10x Cage Nuts	0.58	52
CSWC276060D	600 x 600 x 1365mm	27RU	320 x 450mm	2x Fans, 1x Fixed Shelf, 10x Cage Nuts	0.64	56

SWING FRAME WALL MOUNT CABINETS

E Series 19" Swing Frame Wall Mount Cabinets - Reversible Backmount

FEATURES

- Max loading: 60kg
- Supplied complete, no assembly required
- Gloss black colour, easy clean surface
- Fan kit not included
- Material: SPCC quality cold rolled steel
- Thickness: Square hole strips 2.0mm, others 1.2mm
- Compatible with 19" International Standard and Metrical & ETSI standards
- Surface Finish: Degrease, acid pickling, rust prevention and parkerizing pure water cleaning, static electricity plastic painting
- Complies with IEC-60297, ANSI/EIA RS-310-D, IEC297-2, DIN41491; PART1, DIN41494; PART7, GB/T3047.2-92 standards
- 2 Year Warranty. Subject to use within the static loading specifications operation within normal environmental conditions and adequate and appropriate mounting installation



Model Code	WxDxH (External)	Capacity	Backmount Hole Size	Includes	M3	Kg
CSWC1260ES	600 x 600 x 635mm	12RU	400 x 400mm	Rear Vertical Cable Tray, 18mm MDF Mounting Panel, 6 Way PDU, 10x Cage Nuts	0.34	37
CSWC1860ES	600 x 600 x 901mm	18RU	400 x 658mm	Rear Vertical Cable Tray, 18mm MDF Mounting Panel, 6 Way PDU, 10x Cage Nuts	0.47	47
CSWC2460ES	600 x 600 x 1167mm	24RU	400 x 925mm	2x Rear Vertical Cable Tray, 18mm MDF Mounting Panel, 6 Way PDU, 10x Cage Nuts	0.60	57

M Series 19" Wall Mount Cabinets

FEATURES

- Max loading: 60kg
- Wall or floor installation type
- Convenient and quick wall mounting
- Supplied complete, no assembly required
- Gloss black colour, easy clean surface
- Material: SPCC quality cold rolled steel
- Thickness: Square hole strips 1.2mm, others 1.0mm
- Surface Finish: Degrease, acid pickling, rust prevention and parkerizing pure water cleaning, static electricity plastic painting
- Complies with ANSI/EIA RS-310-D, IEC297-2, DIN41491; PART 1, DIN41494; PART7, GB/T3047.2-92
- Compatible with 19" International Standard and Metrical & ETSI standards
- 2 Year Warranty on cabinet. Subject to use within the static loading Specifications, operation within normal environmental conditions and adequate and appropriate mounting installation. 1 Year Warranty on fans



Model Code	WxDxH (External)	Capacity	Includes	M3	Kg
CSWC645M	600 x 450 x 368mm	6RU	2x Fans, 1x Fixed Shelf, 10x Cage Nuts	0.16	18
CSWC945M	600 x 450 x 501mm	9RU	2x Fans, 1x Fixed Shelf, 10x Cage Nuts	0.21	21
CSWC1245M	600 x 450 x 635mm	12RU	2x Fans, 1x Fixed Shelf, 10x Cage Nuts	0.26	29
CSWC1845M	600 x 450 x 901mm	18RU	2x Fans, 1x Fixed Shelf, 10x Cage Nuts	0.36	34

19" HINGED WALL BRACKETS / 10" CABINET

19" Hinged Wall Brackets

MODEL CODE	DEPTH	TYPE
CS19WB2	100mm	2RU
CS19WB3	100mm	3RU
CS19WB4	100mm	4RU
CS19WBC100	100mm	Top Shelf/Lid

FEATURES

- Incorporates swing arm for easy installation and maintenance
- Black colour



CS19WB4

Vertical Wall Mount

MODEL CODE	SIZE (HxDxW)
CS19WBV2	153 x 2U x 19"
CS19WBV3	153 x 3U x 19"
CS19WBV4	153 x 4U x 19"

Vertical wall mount bracket.



CS19WBV3

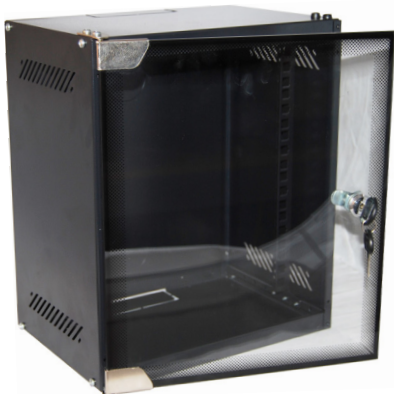
10" Mini Cabinet

MODEL CODE	WxDxH	SIZE
CS10"6RU	280 x 200 x 329mm	6RU
CS10"6RUD	280 x 310 x 329mm	6RU
CS10"9RU	280 x 200 x 462mm	9RU
CS10"9RUD	280 x 310 x 462mm	9RU

FEATURES

- Front glass door
- Turning angle of front door is over 180°
- Wall mounting installation, bracket included
- Cable entry on both top cover and bottom panel
- Material: SPCC Cold Rolled Steel
- Mounting profile thickness: 1.5mm, others: 0.8mm
- Surface finish: powder coated, Gloss black colour

- **Supplied in flat pack**



10" Cabinet Accessories

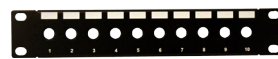
MODEL CODE	TYPE
CS10"CS12PP	10" 12 Port Cat5e Patch Panel
CS10"C612PP	10" 12 Port Cat6 Patch Panel
CS10"F10P	10" 10 Port Empty F Connector Panel
CS10"8PK	10" 8 Port Empty Keystone Jack Panel
CS10"12PK	10" 12 Port Empty Keystone Jack Panel
CS10"CMP1	10" Cable Management Panel
CS10"SHELF	10" 1RU Cantilever Shelf 137mm deep



CS10"CS12PP



CS10"8PK



CS10"F10P



CS10"12PK



CS10"SHELF



CS10"CMP1