

FIBRE OPTIC PATCH LEADS

OM1 62.5µm Multimode Duplex Fibre Leads

FEATURES

- 100% tested & certified
- Test results are supplied with every lead
- Every patch lead is tested to below 0.3dB insertion loss
- Each patch lead is serialised for traceability and ISO compliance
- All patch leads are LSZH and patch cord is RoHS compliant
- Fibre connectors are machine polished for consistent quality

SPECIFICATIONS

- Fibre diameter: 62.5µm
- Buffer diameter: 125µm
- Outer diameter: 2mm for LC, 3mm for ST, SC
- Connector colour: Beige
- Fibre colour: Orange

CONNECTORS	0.5M	1M	2M	3M	5M	10M	15M	20M
LC / LC	FL-LCLC-0	FL-LCLC-1	FL-LCLC-2	FL-LCLC-3	FL-LCLC-5	FL-LCLC-10	FL-LCLC-15	FL-LCLC-20
LC / SC	FL-LCSC-0	FL-LCSC-1	FL-LCSC-2	FL-LCSC-3	FL-LCSC-5	FL-LCSC-10	FL-LCSC-15	FL-LCSC-20
LC / ST	FL-LCST-0	FL-LCST-1	FL-LCST-2	FL-LCST-3	FL-LCST-5	FL-LCST-10	FL-LCST-15	FL-LCST-20
SC / SC	FL-SCSC-0	FL-SCSC-1	FL-SCSC-2	FL-SCSC-3	FL-SCSC-5	FL-SCSC-10	FL-SCSC-15	FL-SCSC-20
SC / ST	FL-SCST-0	FL-SCST-1	FL-SCST-2	FL-SCST-3	FL-SCST-5	FL-SCST-10	FL-SCST-15	FL-SCST-20
MT / SC	FL-MTSC-0	FL-MTSC-1	FL-MTSC-2	FL-MTSC-3	FL-MTSC-5	FL-MTSC-10	FL-MTSC-15	FL-MTSC-20
ST / ST	FL-STST-0	FL-STST-1	FL-STST-2	FL-STST-3	FL-STST-5	FL-STST-10	FL-STST-15	FL-STST-20
MT / ST	FL-MTST-0	FL-MTST-1	FL-MTST-2	FL-MTST-3	FL-MTST-5	FL-MTST-10	FL-MTST-15	FL-MTST-20
MT / MT	FL-MTMT-0	FL-MTMT-1	FL-MTMT-2	FL-MTMT-3	FL-MTMT-5	FL-MTMT-10	FL-MTMT-15	FL-MTMT-20



LC to LC Patch Lead



LC to SC Patch Lead



LC to ST Patch Lead



SC to SC Patch Lead



SC to MT Patch Lead

OM3 50µm Multi-mode Duplex Fibre Leads

FEATURES

- 100% Tested & Certified
- Test results are supplied with every lead
- Every patch lead is tested to below 0.3dB insertion loss
- Each patch lead is serialised for traceability and ISO compliance
- All patch leads are LSZH and patch cord is RoHS compliant
- Fibre connectors are machine polished for consistent quality

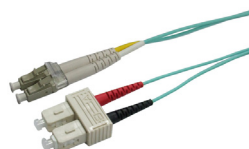
SPECIFICATIONS

- Fibre diameter: 50µm
- Buffer diameter: 125µm
- Outer diameter: 2mm for LC, 3mm for ST, SC
- Connector colour: Beige
- Fibre Colour: Aqua

CONNECTORS	0.5M	1M	2M	3M	4M	5M	7.5M	10M	15M	20M	30M
LC / LC	FL-LCLC50-0	FL-LCLC50-1	FL-LCLC50-2	FL-LCLC50-3		FL-LCLC50-5	FL-LCLC50-7H	FL-LCLC50-10	FL-LCLC50-15	FL-LCLC50-20	FL-LCLC50-30
LC / MT	FL-LCMT50-0	FL-LCMT50-1	FL-LCMT50-2	FL-LCMT50-3		FL-LCMT50-5		FL-LCMT50-10		FL-LCMT50-20	FL-LCMT50-30
LC / SC	FL-LCSC50-0	FL-LCSC50-1	FL-LCSC50-2	FL-LCSC50-3		FL-LCSC50-5	FL-LCSC50-7H	FL-LCSC50-10	FL-LCSC50-15	FL-LCSC50-20	FL-LCSC50-30
LC / ST	FL-LCST50-0	FL-LCST50-1	FL-LCST50-2	FL-LCST50-3		FL-LCST50-5		FL-LCST50-10		FL-LCST50-20	FL-LCST50-30
SC / SC	FL-SCSC50-0	FL-SCSC50-1	FL-SCSC50-2	FL-SCSC50-3		FL-SCSC50-5	FL-SCSC50-7H	FL-SCSC50-10	FL-SCSC50-15	FL-SCSC50-20	FL-SCSC50-30
SC / ST	FL-SCST50-0	FL-SCST50-1	FL-SCST50-2	FL-SCST50-3		FL-SCST50-5		FL-SCST50-10		FL-SCST50-20	FL-SCST50-30
MT / SC	FL-MTSC50-0	FL-MTSC50-1	FL-MTSC50-2	FL-MTSC50-3		FL-MTSC50-5		FL-MTSC50-10		FL-MTSC50-20	FL-MTSC50-30
ST / ST	FL-STST50-0	FL-STST50-1	FL-STST50-2	FL-STST50-3	FL-STST50-4	FL-STST50-5		FL-STST50-10		FL-STST50-20	FL-STST50-30
MT / ST	FL-MTST50-0	FL-MTST50-1	FL-MTST50-2	FL-MTST50-3		FL-MTST50-5		FL-MTST50-10		FL-MTST50-20	FL-MTST50-30
MT / MT	FL-MTMT50-0	FL-MTMT50-1	FL-MTMT50-2	FL-MTMT50-3		FL-MTMT50-5		FL-MTMT50-10		FL-MTMT50-20	FL-MTMT50-30



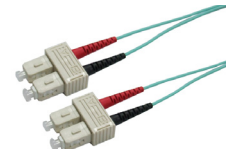
LC to LC Patch Lead



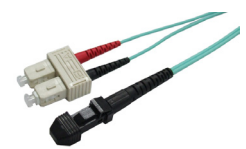
LC to SC Patch Lead



LC to ST Patch Lead



SC to SC Patch Lead



SC to MT Patch Lead

OS1 9µm Single Mode DUPLEX Fibre Leads

FEATURES

- 100% tested & certified
- Test results are supplied with every lead
- Every patch lead is tested to below 0.3dB insertion loss
- Each patch lead is serialised for traceability and ISO compliance
- All patch leads are LSZH and patch cord is RoHS compliant
- Fibre connectors are machine polished for consistent quality

SPECIFICATIONS

- G.657.A Bend insensitive fibre
- Fibre diameter: 9µm
- Buffer diameter: 125µm
- Outer diameter: 2mm for LC, 3mm for ST, SC
- Connector colour: Blue. Green for SC APC
- Fibre colour: Yellow

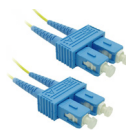
CONNECTORS	0.5M	1M	2M	3M	5M	10M	20M	30M	40M
LC / LC	FSM-LCLC-0	FSM-LCLC-1	FSM-LCLC-2	FSM-LCLC-3	FSM-LCLC-5	FSM-LCLC-10	FSM-LCLC-20	FSM-LCLC-30	FSM-LCLC-40
LC / SC	FSM-LCSC-0	FSM-LCSC-1	FSM-LCSC-2	FSM-LCSC-3	FSM-LCSC-5	FSM-LCSC-10	FSM-LCSC-20	FSM-LCSC-30	
SC / SC	FSM-SCSC-0	FSM-SCSC-1	FSM-SCSC-2	FSM-SCSC-3	FSM-SCSC-5	FSM-SCSC-10	FSM-SCSC-20	FSM-SCSC-30	
ST / ST					FSM-STST-5				
SC APC / SC APC	FSM-SCASCA-0	FSM-SCASCA-1	FSM-SCASCA-2	FSM-SCASCA-3	FSM-SCASCA-5	FSM-SCASCA-10	FSM-SCASCA-20	FSM-SCASCA-30	
LC APC / LC APC	FSM-LCALCA-0	FSM-LCALCA-1	FSM-LCALCA-2	FSM-LCALCA-3	FSM-LCALCA-5				
LC APC / SC APC	FSM-LCASCA-0	FSM-LCASCA-1	FSM-LCASCA-2	FSM-LCASCA-3	FSM-LCASCA-5				
LC / ST	FSM-LCST-0	FSM-LCST-1	FSM-LCST-2	FSM-LCST-3	FSM-LCST-5	FSM-LCST-10	FSM-LCST-20	FSM-LCST-30	



LC / LC



LC / SC



SC / SC



ST / ST



SC APC / SC APC



LC APC / LC APC



LC APC / SC APC



LC / ST

OS1 9µm Single Mode SIMPLEX Fibre Leads

FEATURES

- 100% tested & certified
- Test results are supplied with every lead
- Every patch lead is tested to below 0.3dB insertion loss
- Each patch lead is serialised for traceability and ISO compliance
- All patch leads are LSZH and patch cord is RoHS compliant
- Fibre connectors are machine polished for consistent quality

SPECIFICATIONS

- G.657.A Bend insensitive fibre
- Fibre diameter: 9µm
- Buffer diameter: 125µm
- Outer diameter: 2mm for LC, 3mm for ST, SC
- Connector colour: Blue. Green for SC APC
- Fibre colour: Yellow

CONNECTORS	0.5M	1M	2M	3M	5M	10M
LC APC / LC APC		FSM-LCALCA-1-SX	FSM-LCALCA-2-SX	FSM-LCALCA-3-SX	FSM-LCALCA-5-SX	FSM-LCALCA-10-SX
LC APC / LC		FSM-LCALC-1-SX	FSM-LCALC-2-SX	FSM-LCALC-3-SX	FSM-LCALC-5-SX	FSM-LCALC-10-SX
LC APC / SC APC		FSM-LCASCA-1-SX	FSM-LCASCA-2-SX	FSM-LCASCA-3-SX	FSM-LCASCA-5-SX	FSM-LCASCA-10-SX
LC APC / SC		FSM-LCASC-1-SX	FSM-LCASC-2-SX	FSM-LCASC-3-SX	FSM-LCASC-5-SX	FSM-LCASC-10-SX
SC APC / SC APC	FSM-SCASCA-0-SX	FSM-SCASCA-1-SX	FSM-SCASCA-2-SX	FSM-SCASCA-3-SX	FSM-SCASCA-5-SX	FSM-SCASCA-10-SX
SC APC / SC		FSM-SCASC-1-SX	FSM-SCASC-2-SX	FSM-SCASC-3-SX	FSM-SCASC-5-SX	FSM-SCASC-10-SX
SC APC / LC		FSM-SCALC-1-SX	FSM-SCALC-2-SX	FSM-SCALC-3-SX	FSM-SCALC-5-SX	FSM-SCALC-10-SX



LC APC / LC APC



LC APC / LC



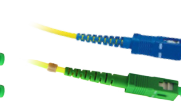
LC APC / SC APC



LC APC / SC



SC APC / SC APC



SC APC / SC



SC APC / LC

FIBRE OPTIC PATCH LEADS / PIGTAILS

OM4 50µm Multi-mode Duplex Fibre Leads

What is OM4?

OM4 is a laser-optimized, high-bandwidth 50µm multimode cabled fibre defined in IEC (ISO/IEC 11801), EN 50173-1 and TIA/EIA 492AAAD. OM4 provides higher bandwidth compared to OM3 when measured at 850nm.

FEATURES

- 100% Tested & Certified
- Test results are supplied with every lead
- Every patch lead is tested to below 0.3dB insertion loss
- Each patch lead is serialised for traceability and ISO compliance
- All patch leads are LSZH and patch cord is RoHS compliant
- Fibre connectors are machine polished for consistent quality

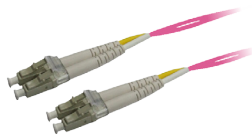
What is the benefit of OM4?

Higher bandwidth allows longer channel lengths for high speed applications and provides more head room for richer network design. Typical implementation of OM4 is for requirements between 300m and 550m at 10Gb/s or between 100m and 125m at 40Gb/s or 100Gb/s.

SPECIFICATIONS

- Fibre type: OM4 Bend insensitive
- Fibre diameter: 50µm
- Buffer diameter: 125µm
- Outer diameter: 2mm for LC, 3mm for SC
- Connector colour: Beige
- Fibre Colour: Pink

CONNECTORS	0.5M	1M	2M	3M	5M	10M	15M	20M	30M
LC / LC	FL-LCLCOM4-0	FL-LCLCOM4-1	FL-LCLCOM4-2	FL-LCLCOM4-3	FL-LCLCOM4-5	FL-LCLCOM4-10	FL-LCLCOM4-15	FL-LCLCOM4-20	FL-LCLCOM4-30
LC / SC	FL-LCSCOM4-0	FL-LCSCOM4-1	FL-LCSCOM4-2	FL-LCSCOM4-3	FL-LCSCOM4-5	FL-LCSCOM4-10	FL-LCSCOM4-15	FL-LCSCOM4-20	FL-LCSCOM4-30
SC / SC	FL-SCSCOM4-0	FL-SCSCOM4-1	FL-SCSCOM4-2	FL-SCSCOM4-3	FL-SCSCOM4-5	FL-SCSCOM4-10	FL-SCSCOM4-15	FL-SCSCOM4-20	FL-SCSCOM4-30



LC to LC Patch Lead



LC to SC Patch Lead



SC to SC Patch Lead

Fibre Optic Pigtaills

FEATURES

- Length 2m
- Multimode & Singlemode applications ST/SC/SC APC/FC/LC/E2000
- Every pigtail is tested to below 0.3dB insertion loss
- Full traceability & test certification supplied with each assembly
- 900µm tight buffer fibre optic cable
- 6/12 Pack colour coded to international standards



COLOUR CODES

6 Pack

1. Blue
2. Orange
3. Green
4. Brown
5. Slate
6. White

12 Pack

- | | |
|-----------|------------|
| 1. Blue | 7. Red |
| 2. Orange | 8. Black |
| 3. Green | 9. Yellow |
| 4. Brown | 10. Violet |
| 5. Slate | 11. Rose |
| 6. White | 12. Aqua |

CONNECTORS	6 Pack 2M colour coded	12 Pack 2M colour coded
LC MM OM4	FPT-OM4LC-6	FPT-OM4LC-12
SC MM OM4	FPT-OM4SC-6	FPT-OM4SC-12
LC MM OM3	FPT-OM3LC-6	FPT-OM3LC-12
SC MM OM3	FPT-OM3SC-6	FPT-OM3SC-12
ST MM OM3	FPT-OM3ST-6	FPT-OM3ST-12
LC MM OM1	FPT-OM1LC-6	FPT-OM1LC-12
LCA MM OM1	FPT-OM1LCA-6	FPT-OM1LCA-12
SC MM OM1	FPT-OM1SC-6	FPT-OM1SC-12
ST MM OM1	FPT-OM1ST-6	FPT-OM1ST-12
LC SM OS1	FPT-OS1LC-6	FPT-OS1LC-12
LCA SM OS1		
SC SM OS1	FPT-OS1SC-6	FPT-OS1SC-12
ST SM OS1	FPT-OS1ST-6	FPT-OS1ST-12

KEY: OM1 = MULTIMODE (1G) OM3 = MULTIMODE (10G) OS1 = SINGLEMODE