

# Communication



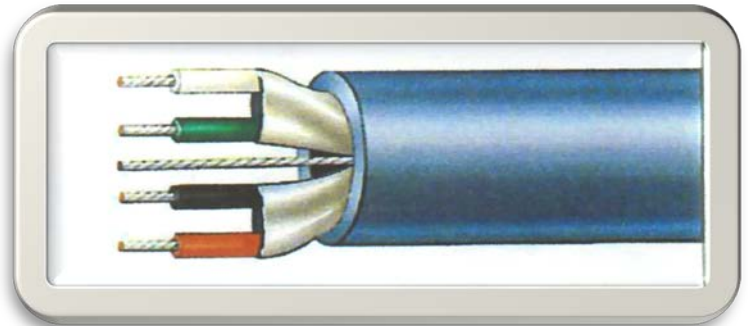
## Multi Pair Individual Screened (8723 Equiv.)

**Uses:** Interconnection between Control and Audio Equipment.

**Conductor:** Tinned Copper Wire.

**Screen:** Individual aluminium / Polyester laminate tape screens with a 7/0.25mm tinned copper drain wire.

**Pair colours:** 1. Black / Red. 2. Green / White



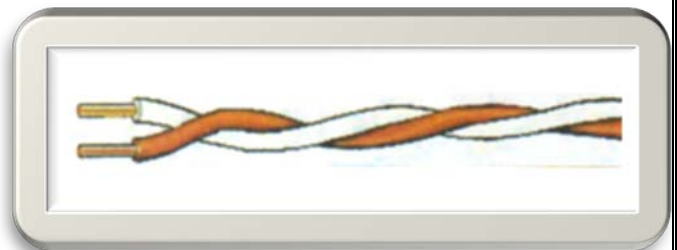
CODE	Pairs	Conductors NO. /DIA. (mm)	Nom. Area Per Core (mm <sup>2</sup> )	Nominal Thickness		Capacitance		Electrical Resistance @20°C (MΩ) Per Core	Nominal O.D (mm)
				Insulation (mm)	Sheath (mm)	Mutual (mm)	Wire Screen (max)		
CSSEC8723EQ ( * )	2	7/0.25	0.34	0.26	0.4	115	200	56	4.3

( \* ) Substitute for Qty i.e. 100mtr, 250mtr, 500mtr

## Jumper Wire

**Uses:** Wiring of electronic equip, Interconnection of Internal Telephone Frames

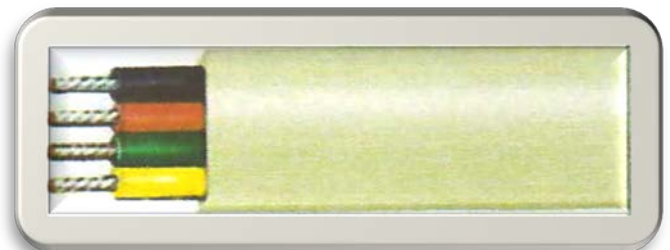
CODE	Conductors (mm)	Area (mm <sup>2</sup> )	Amp	Nominal O/D (mm)
CSTELJUMP	1/0.5	0.2	0.5	1.7



Colours Available: Red/White, Blue/White, Green/White & Purple/Brown

## Flat Modular Telephone

**Uses:** Connection of apparatus working on DC or Voice frequency Signals



CODE	Cores	Core Colours	Size (mm)	Nom O/D (mm)
CSTEL4MOD	4	BK,RD,GRN,Y	7/0.15	5.0 X 2.2
CSTEL6MOD	6	W,BK,RD,GRN,Y BLU	7/0.15	7.0 X 2.2
CSTEL8MOD	8	W,O,BK,R,GRN,Y,BLU,BR	7/0.15	9.0 X 2.2
CSTEL10MOD	10	W,O,BK,R,GRN,Y,BLU,BR,V,GY	7/0.15	10.5 X 2.2

# Communication

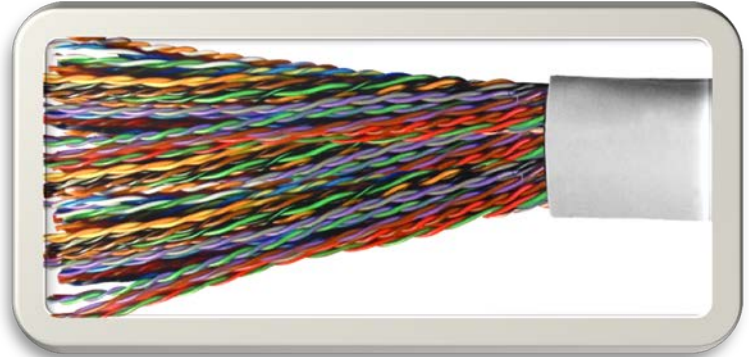


## Telephone Cable - Internal

**Conductors:** Plain Copper Wire V-75 insulated.

**Sheath:** PVC-V75, Cream for internal use.

**Construction:** Insulated wires twisted into pairs.



COLOUR CHART

CODE	Description	Conductors (mm)	No. Cores	O/D (mm)
CSTEL2PIN	1 Quad / 2 PAIR	1/0.5	4	3.5
CSTEL3PIN	3 PAIR	1/0.5	6	4.8
CSTEL6PIN	6 PAIR	1/0.5	12	6.1
CSTEL10PIN	10 PAIR	1/0.5	20	7.4
CSTEL20PIN	20 PAIR	1/0.5	40	9.2
CSTEL25PIN	25 PAIR	1/0.5	50	10
CSTEL50PIN	50 PAIR	1/0.5	100	13.5
CSTEL100PIN	100 PAIR	1/0.5	200	19

Element number	Wire 1	Wire 2	Wire 3	Wire 4
1	White	Blue	Red	Black
2	White	Orange		
3	White	Green		
4	White	Brown		
5	White	Grey		
6	White	White/Blue		
7	White	Blue/Orange		
8	White	Blue/Green		
9	White	Blue/Brown		
10	White	Blue/Grey		
11	White	White/Orange		
12	White	Orange/Green		
13	White	Orange/Brown		
14	White	Orange/Grey		
15	White	White/Green		
16	White	Green/Brown		
17	White	Green/Grey		
18	White	White/Brown		
19	White	Brown/Grey		
20	White	White/Grey		
21-40	Yellow	As Above		
41-60	Black	As Above		
61-80	Violet	As Above		
81-100	Red	As Above		



**NOTES:**

1. Diagonally opposite wires in each quad form a pair, i.e. wires 1 & 2 and wires 3 & 4.
2. For 3 pair cables the colours are white, blue, red, black, orange and green respectively.
3. Element numbering commences in outer layer.